

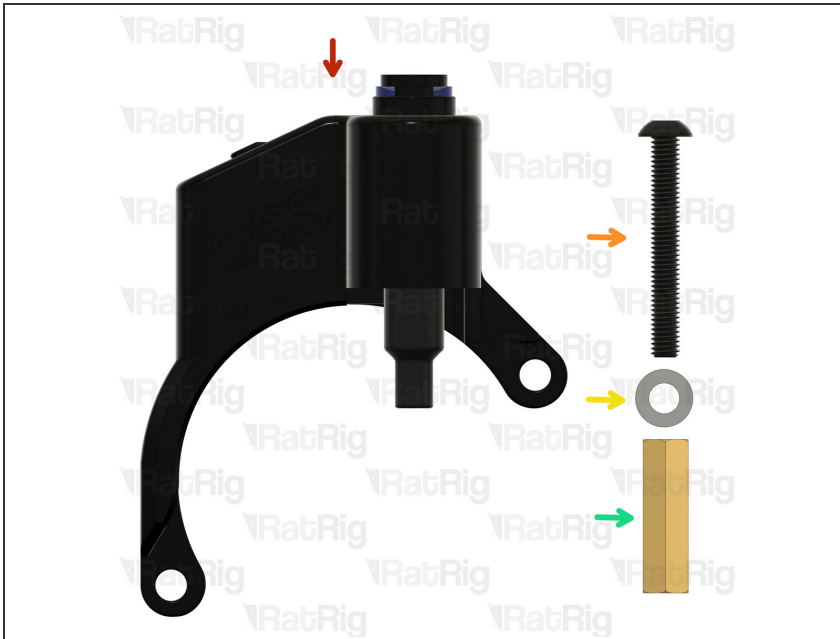
Rat Rig

04. Orbiter Smart Sensor

Written By: Rat Rig

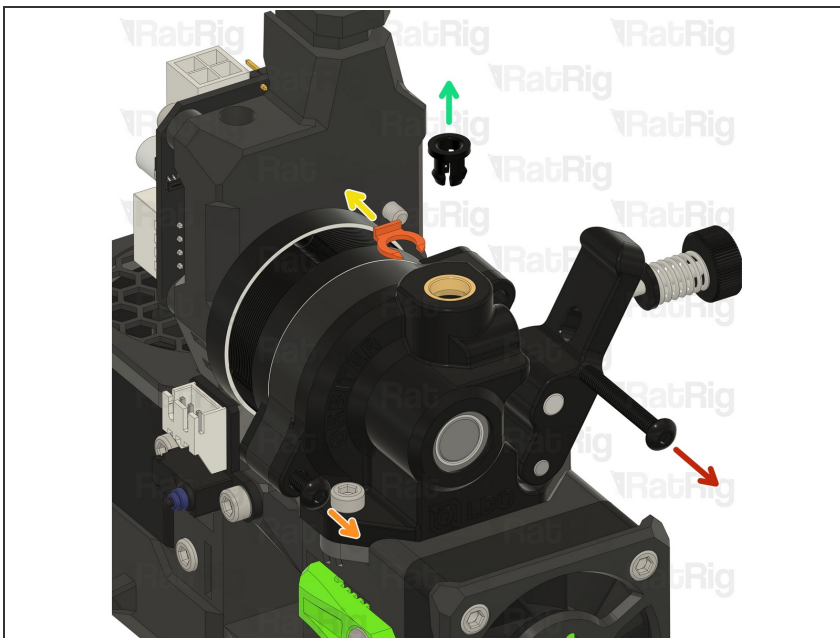


Step 1 — Prepare the following parts



- Orbiter 2 smart sensor
- 1x M3x25 Button head (included in the orbiter 2 smart sensor box)
- 1x M3 washer (M3x6x0.5) (included in the orbiter 2 smart sensor box)
- 1x M3x16mm Hex Spacer

Step 2 — Prepare the Orbiter



- Remove the top right M3 Button head screw, it will not be used.
- Remove the lower left M3 button head screw by 5-8mm.
- Remove the PTFE retaining clip.
- Remove the PTFE locking mechanism by pulling it upwards.

Step 3 — Remove the old spacer



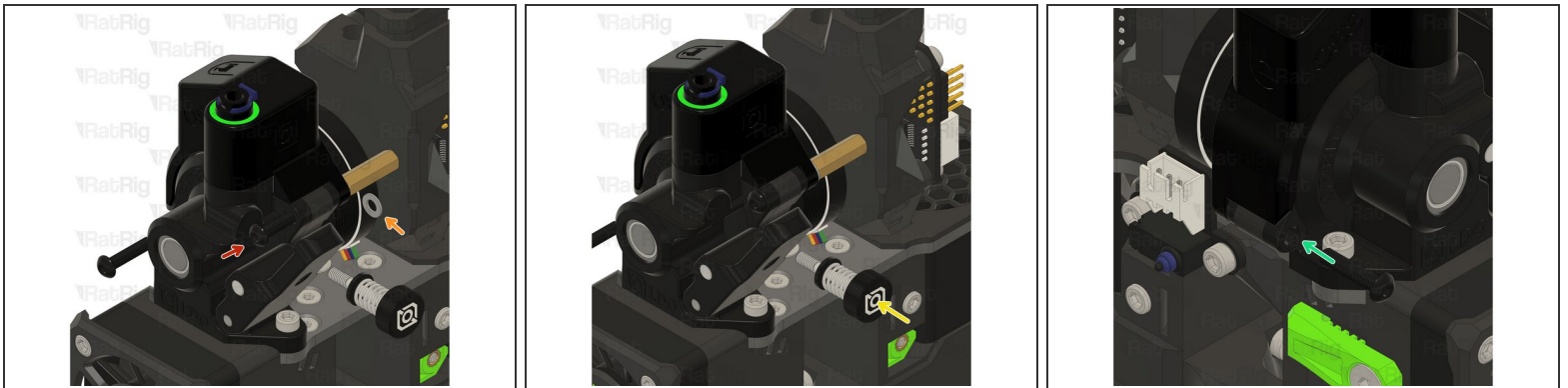
- Remove the toolboard screws
 - ❗ If you are careful, there is no need to disconnect the wires from the toolboard.
- Partially remove the toolboard.
- Remove the M3 Cap Head Screw holding the M3 Hex spacer.
- Remove the M3 Hex spacer. (It will not be used again).
- Install the new M3x16mm Hex Spacer.
- Re-install the M3 Cap Head Screw.
- Re-install the toolboard and its screws.

Step 4 — Install the new orbiter 2 smart sensor



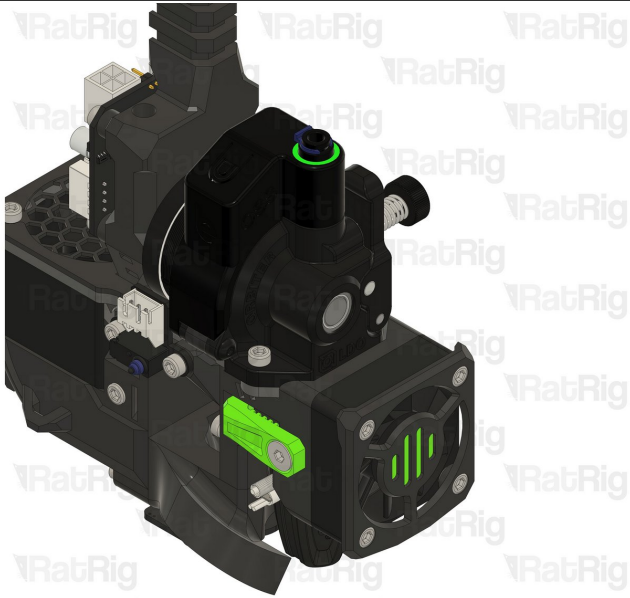
- Insert the orbiter 2 smart sensor inside the PTFE hole, carefully align it.
⚠ Do not force it in, you may damage the orbiter 2 smart sensor.
- Remove the tensioning screw and open the orbiter arm.

Step 5 — Install the fasteners



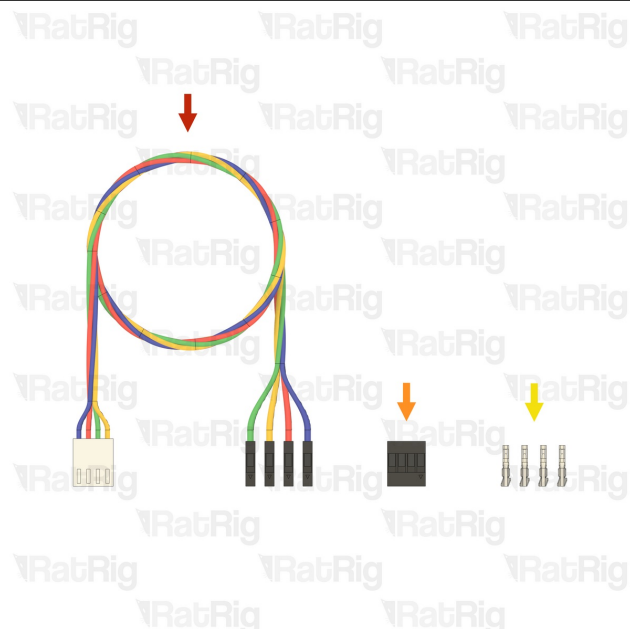
- Thread the M3x25 Button head screw half way.
- Insert the M3 washer between the orbiter 2 smart sensor and the M3 Hex spacer.
- Fully tighten the M3x25 Button head screw.
- Tighten the lower left M3 Button head, ensuring it is fed trough the orbiter 2 smart sensor hole.

Step 6 — Mechanical assembly finished!

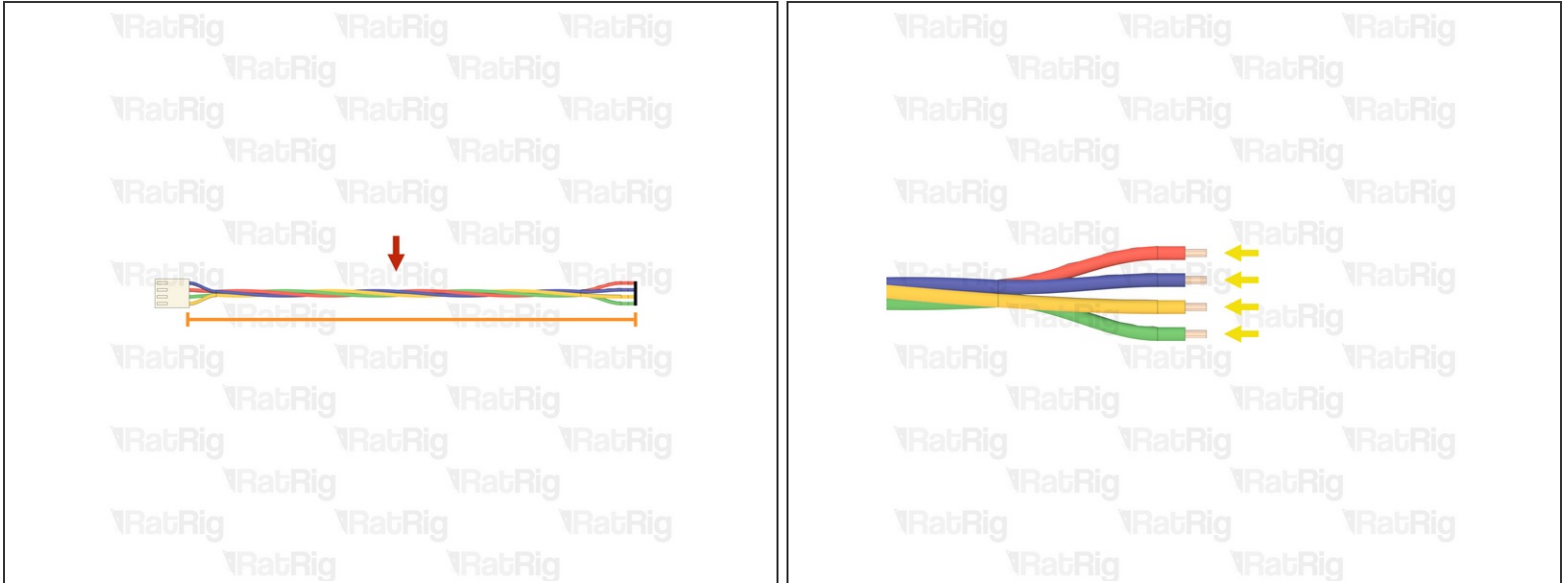


- Nice! You shall not fear empty spools anymore!

Step 7 — Prepare the Orbiter smart sensor wiring parts

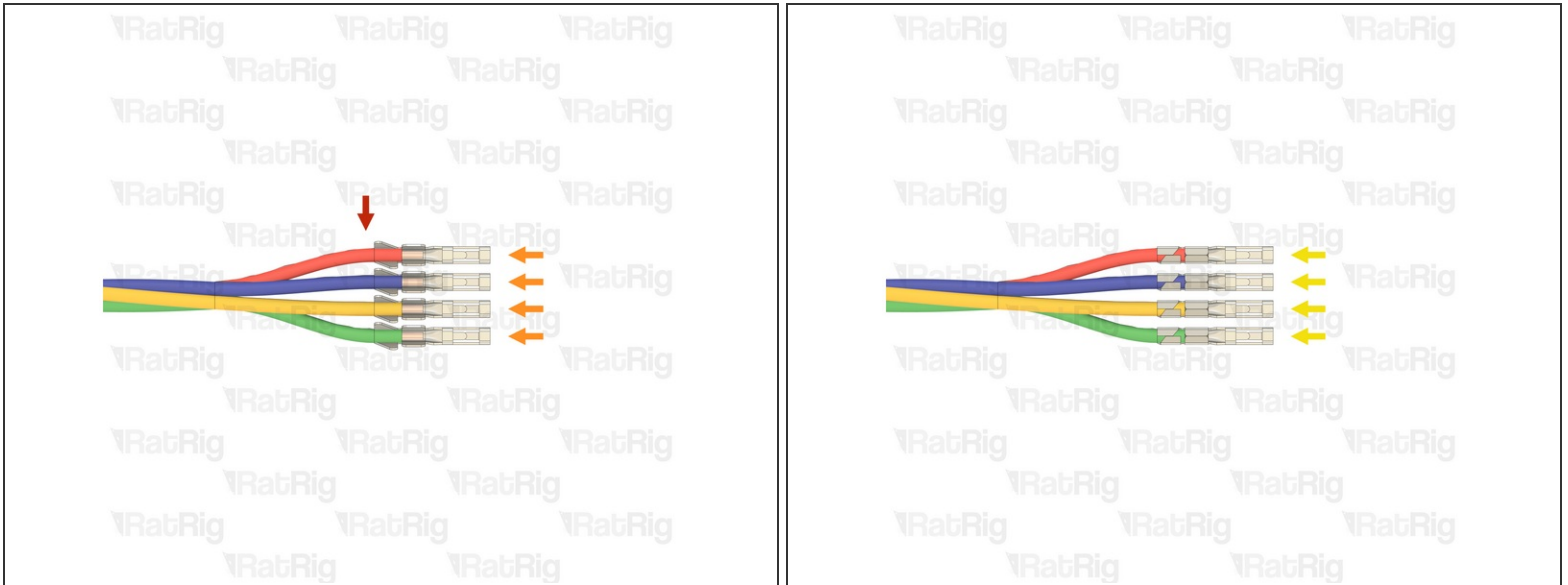


- ① The following part is included in the Orbiter 2 smart sensor box (**SKU: HW3990EC**)
 - 1x Orbiter 2 Smart Sensor Wiring Harness
 - 1x Connector - 4 Pin - Dupont Housing 4x1 - 2.54mm (**SKU: HW4160EC**)
 - 4x Crimp - Dupont 2.54mm Female (**SKU: HW4161EC**)

Step 8 — Prepare the Orbiter smart sensor wiring - Part 1

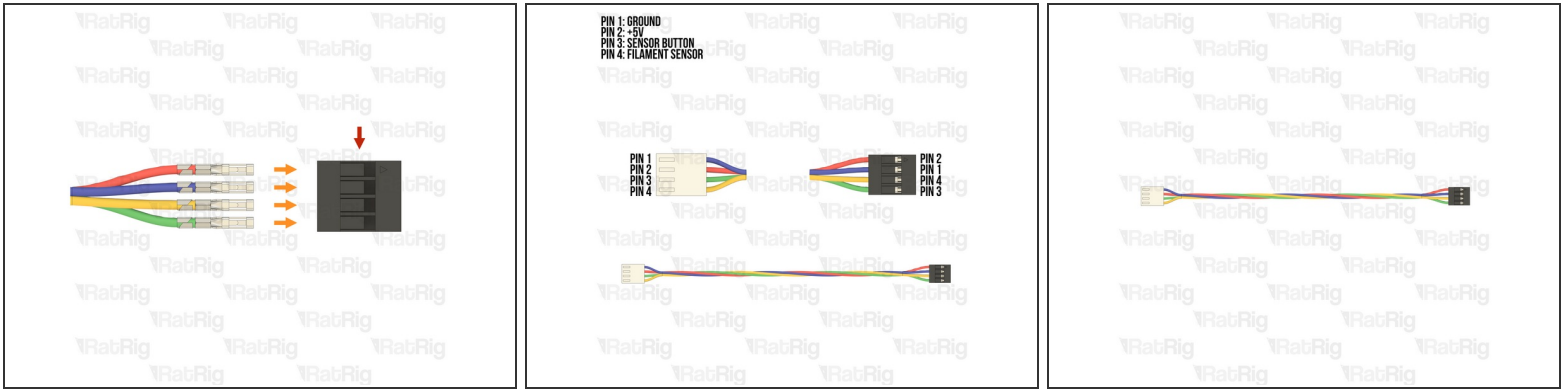
- Orbiter 2 Smart Sensor Wiring Harness
 - Measure 160mm **from the back of the single white connector**
 - Use wire cutters to cut the wiring harness the measured length
 - ① The remaining wire can be discarded, it is no longer needed
 - Strip 2mm of the insulation from the end of each of the bare wires

Step 9 — Prepare the Orbiter smart sensor wiring - Part 2



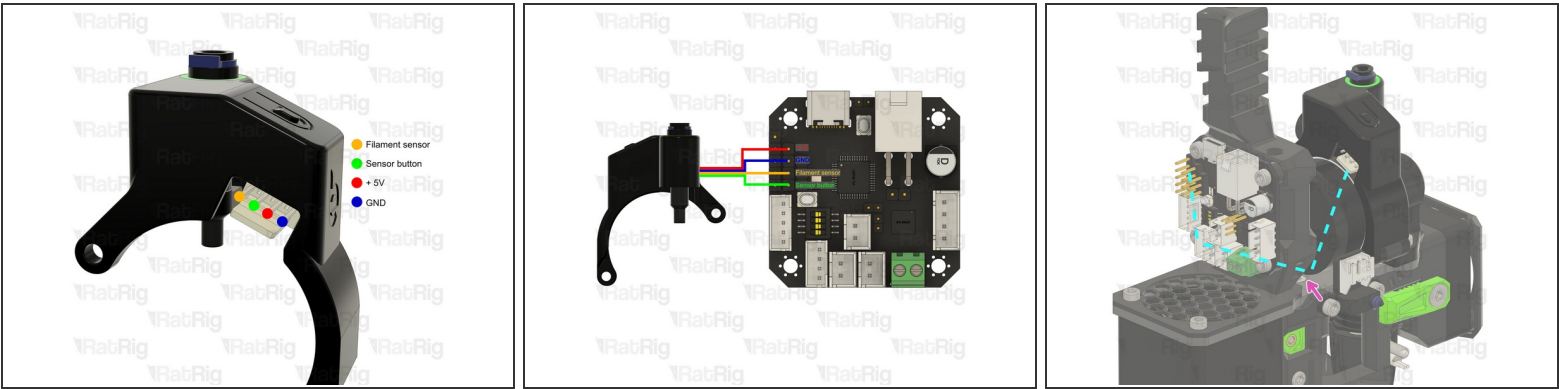
- Prepared wires from the previous step
 - Crimp - Dupont 2.54mm Female
 - Crimp a female Dupont terminal onto each of the four stripped wires
- ⚠ **Before proceeding**, verify that all four crimp terminals are correctly crimped to the wires

Step 10 — Prepare the Orbiter smart sensor wiring - Part 3



- Connector - 4 Pin - Dupont Housing 4x1 - 2.54mm
 - ⚠ **Please note: The wiring colour shown may not match your Orbiter smart sensor harness. It is **very important** to use the provided wiring diagram to correctly assembly the cable. **Do not** blindly follow the wire colours**
 - ℹ Make sure the wires are inserted into the **correct positions**. Incorrect wiring **will damage the Orbiter smart sensor, toolboard, and other electronics**
- Insert the crimped terminals into the Dupont connector, using the wiring diagram provided. The crimp terminals will "click" when fully inserted

Step 11 — Wire the Orbiter smart sensor



- Connect the cable prepared in the previous steps to the Orbiter smart sensor to the EBB42 toolboard
 - ⚠ Pay close attention to the connection to the EBB42 toolboard. The Dupont connector is not keyed and can be installed backwards. Verify the connection before continuing
- Route the cable as shown, using zip ties to secure it in place.
- 📌 For more information about the Orbiter Smart Sensor V2 - [Click Here](#)

Step 12 — Configure the Orbiter Smart Sensor



- Test!
 - 📌 [Click here to be redirected to the config page where you can COPY the text.](#)
 - 📌 For more information about the Orbiter Smart Sensor V2 - [Click Here](#)