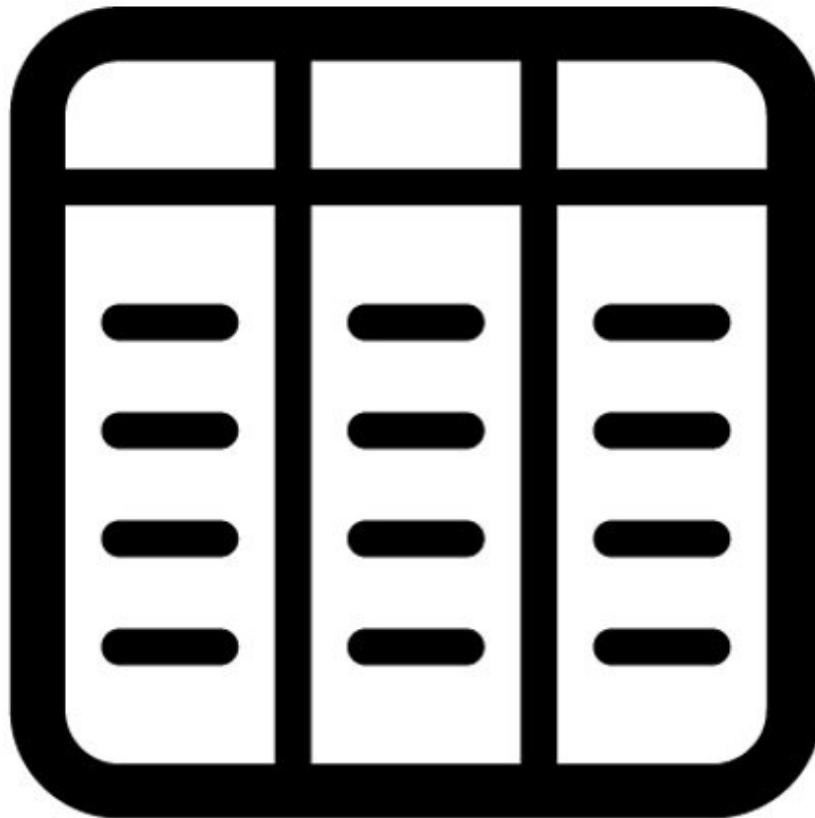




# Create table

Written By: StJohn Vuetilovoni

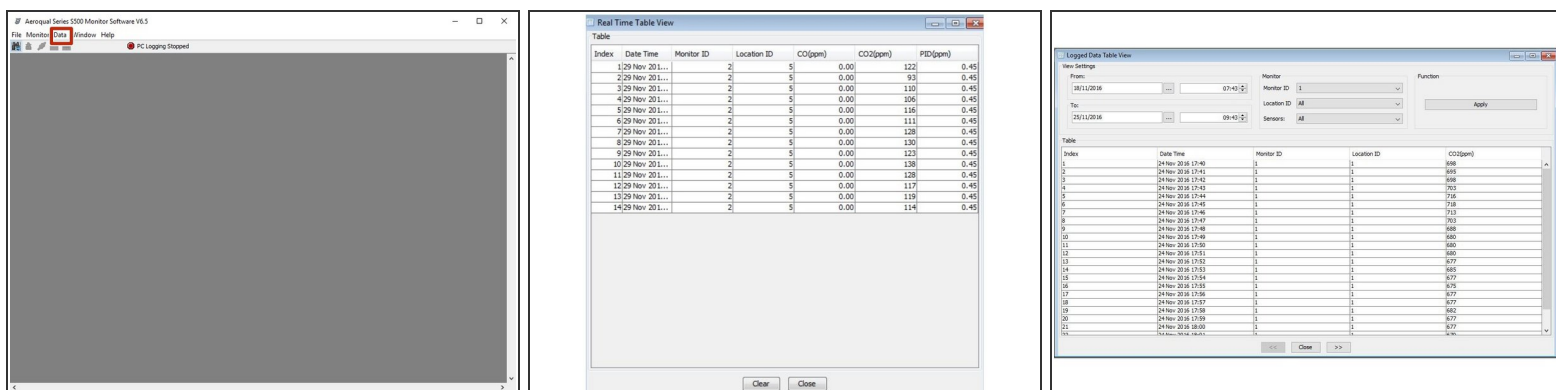


## INTRODUCTION

While logging directly to a PC, you can view data in two different table formats.

**Note:** It assumes you have already [installed the monitor's configuration software](#), [downloaded the cable driver](#) and [connected your monitor to a PC](#).

## Step 1 — Filter data



- [Launch the Aeroqual S500 software](#) and select **Data > Real Time Table View** or **Data > Logged Data Table View** from the menu bar.
- In **Logged Data Table View**, use the date, time, monitor ID, location ID and sensor filters to narrow the data and click **Apply**.
- The **Logged Data Table View** shows up to 7 days of data on each page. Click >> at the bottom of the table to view the previous or next 7 days of data within the filtered data set.
- Only data from one monitor can be viewed in a table at a time.

For further support, contact [Technical Support](#).