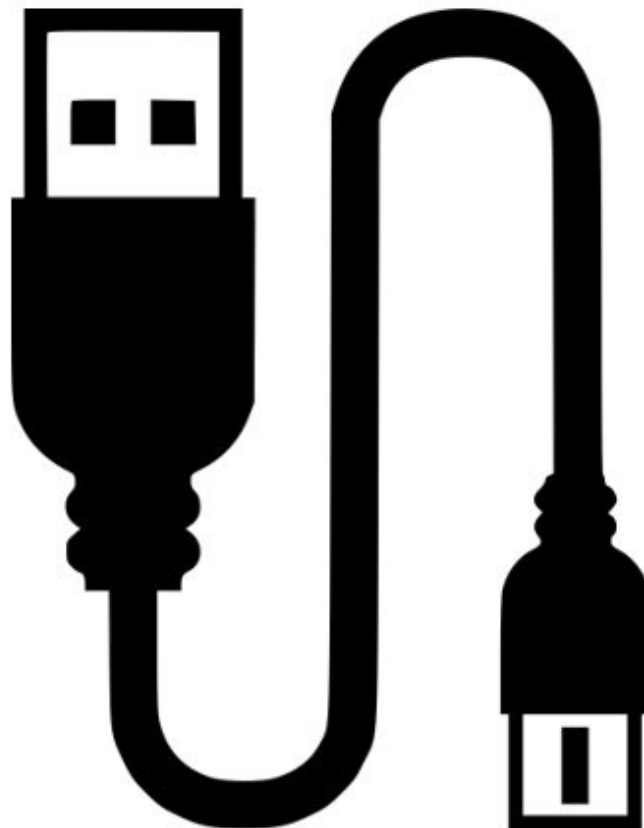




3. Connect monitor to computer

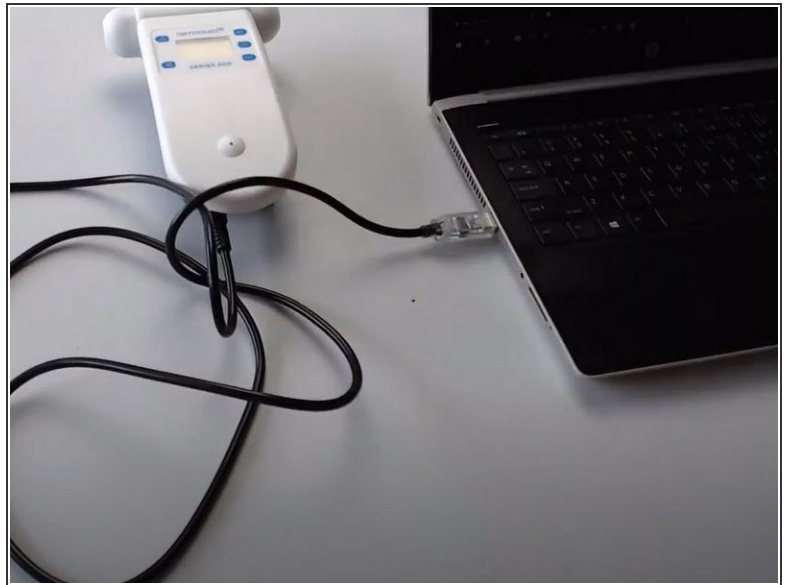
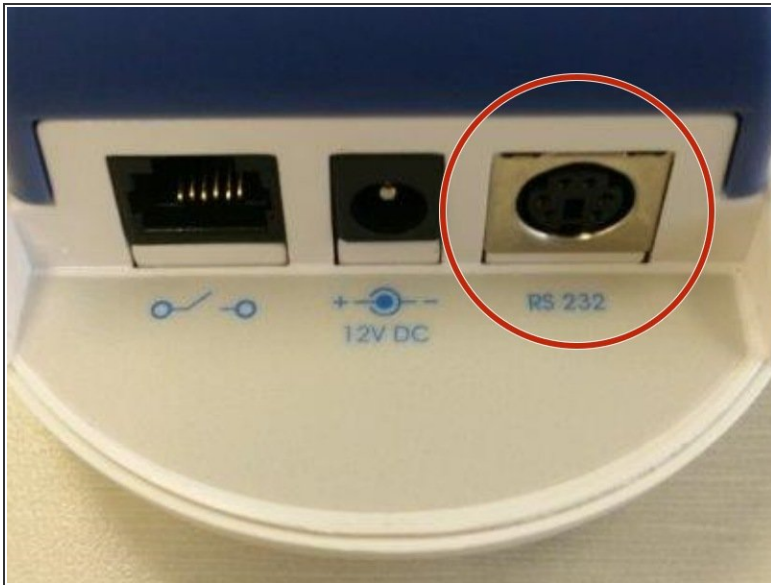
Written By: StJohn Vuetilovoni



INTRODUCTION

This user guide assumes you have already [installed the monitor's configuration software](#) and [downloaded the FTDI cable driver](#).

Step 1 — Insert cables



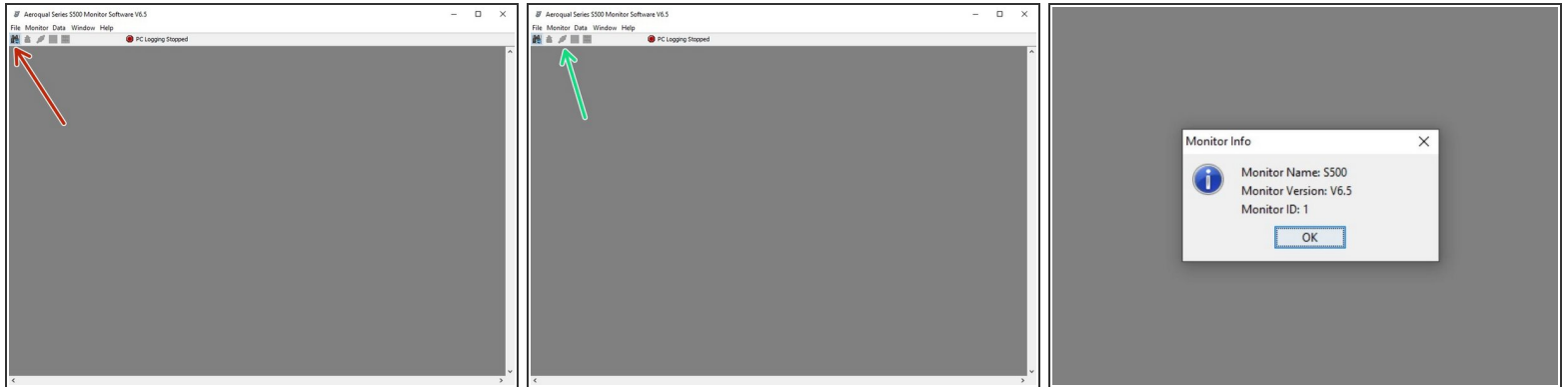
- Connect the USB data cable that came with your Series 500 to the **RS 232** port on your monitor.
- Connect the USB plug to the USB port on your computer.
- Turn on the computer.

Step 2 — Connect two-way cable



- If you have a temperature and relative humidity sensor, first connect the two-way PS2 adapter cable that came with your Series 500 to the RS 232 port on your monitor.

Step 3 — Test connection



- Launch the Aeroqual S500 software and click the binoculars icon to search for the connected monitor. The monitor will be detected and connect automatically.
- To test the communication, click the third icon on the tool bar (two plugs). This displays the monitor name, firmware version, and monitor ID number.
- If the USB communications are unstable, check the connections are secure, the COM port is set up correctly and the clock has synchronized with the software.

For further support, contact [Technical Support](#).