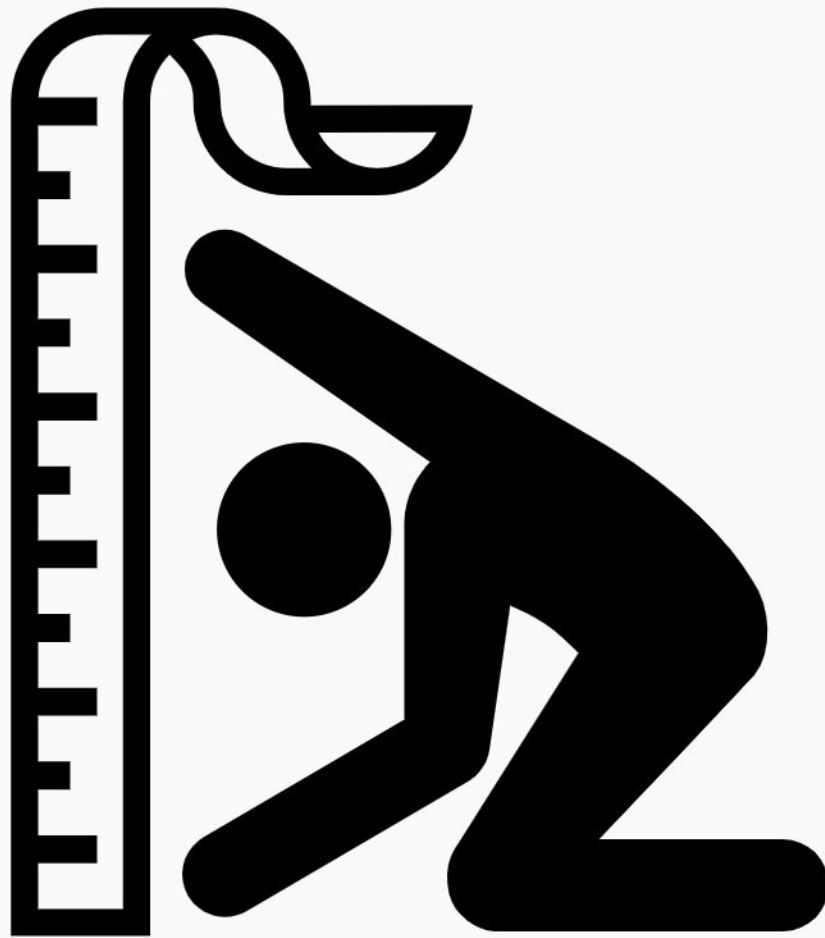


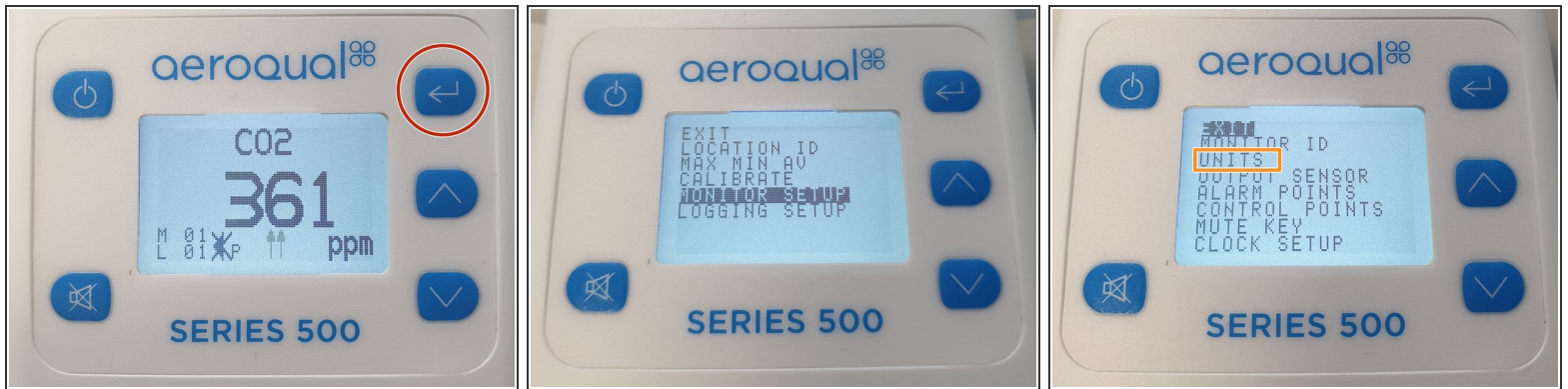


Set measurement units

Written By: StJohn Vuetilovoni

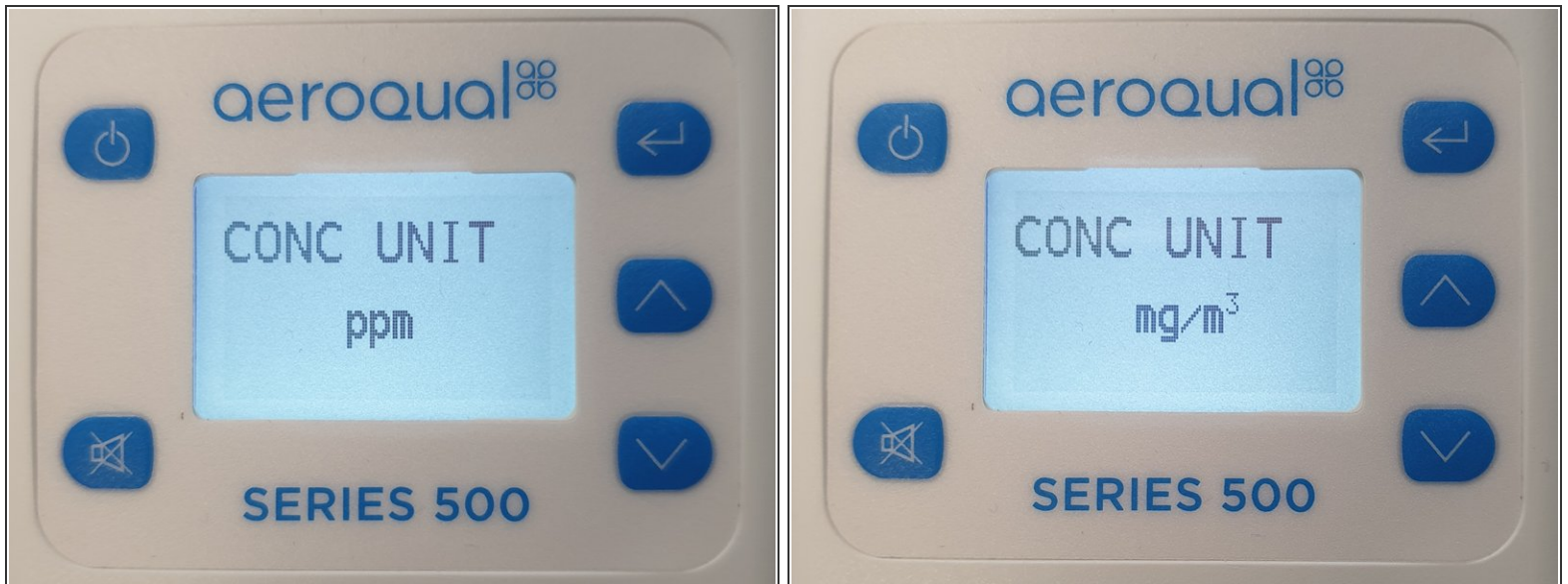


Step 1 — Enter units menu



- If you have a Series 500 or 300 monitor:
 - Press the **ENTER** button and select **MONITOR SETUP** from the main menu.
 - Select **UNITS** from the secondary menu.
- If you have a Series 200, press the **ENTER** button and select **UNITS** from the main menu.

Step 2 — Change unit



- Use the **UP/DOWN** buttons to change the units for your particular sensor:
 - **ppm** or **mg/m³** for a gas sensor.
 - **°C** or **°F** for a temperature and relative humidity sensor.
 - ⓘ **mg/m³** is the only option for a PM sensor.
- To learn about the ppm to mg/m³ conversion factor for each sensor head, [read here](#).
- Press **ENTER** to confirm.

For further support, contact [Technical Support](#).